

Fast Axis Collimator - FAC1500 (BFL=150 μ m)



General Description:

Aspherical cylindrical lens for the collimation of the fast axis of diode lasers.

| **Advanced Optical Solutions** |

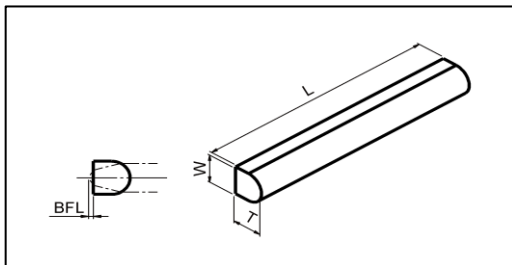
Specification Data	Unit	Value
Material		S-TIH53 (Ohara)
Length (L)	mm	12.0 \pm 0.05
Width (W)	mm	2.0 \pm 0.05
Thickness (T)	mm	2.46 \pm 0.01
Clear aperture	mm ²	11 x 1.4
Surface quality @ 633 nm		$\lambda/4$ (typically)
Refractive index n @ 808 nm		1.823
Effective focal length (EFL) @ 808 nm	mm	1.50
Back focal length (BFL) @ 808 nm	mm	0.150
Numerical aperture (NA)		0.7
Standard coating - AR	nm	790 - 990
Transmission	%	> 99
Power within an angle of \pm 0.45 mrad (*)	%	> 85

Product Codes

AR-coating	Length 12mm
790 - 990 nm	ZLE001960

Options

- Customized coating
- Customized length



(*) Valid for an emitter-height of 1 μ m and no smile of the laser diode.

RoHS compliant
2002/95/EG

Copyright © 2011 LIMO GmbH. All rights reserved. All LIMO products are patent pending. Subject to change without notice.

Version June 22, 2018