

Single-Mode Collimator

Product number: ZLE000406



General Description:

| **Advanced Optical Solutions** |

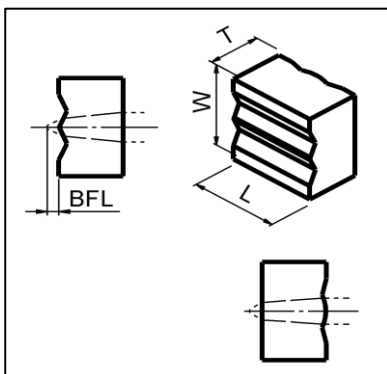
Collimator for single-mode single emitters.

Specification Data

	Unit	Value
Material		S-TIH53 (Ohara)
Length (L)	mm	1.50 ± 0.05
Width (W)	mm	1.50 ± 0.05
Thickness (T)	mm	0.895 ± 0.01
Clear aperture	mm ²	0.45 x 0.45
Surface quality @ 633 nm		λ/4 (typically)
Refractive index n @ 808 nm		1.823
Effective focal length (EFL) for slow axis @ 808 nm	mm	0.65
Back focal length (BFL) @ 808 nm	mm	0.17
Numerical aperture (NA)		FA: 0.6 SA: 0.3 (for emitter size of 4 μm)
Standard coating - AR	nm	790 - 990
Transmission	%	> 99
Fast axis power within an angle of ± 5.5 mrad	%	> 85
Slow axis power within an angle of ± 5.5 mrad	%	> 85

Options

Customized coating



RoHS compliant
2002/95/EG

Copyright © 2011 LIMO GmbH. All rights reserved. All LIMO products are patent pending. Subject to change without notice.

Version December 19, 2017